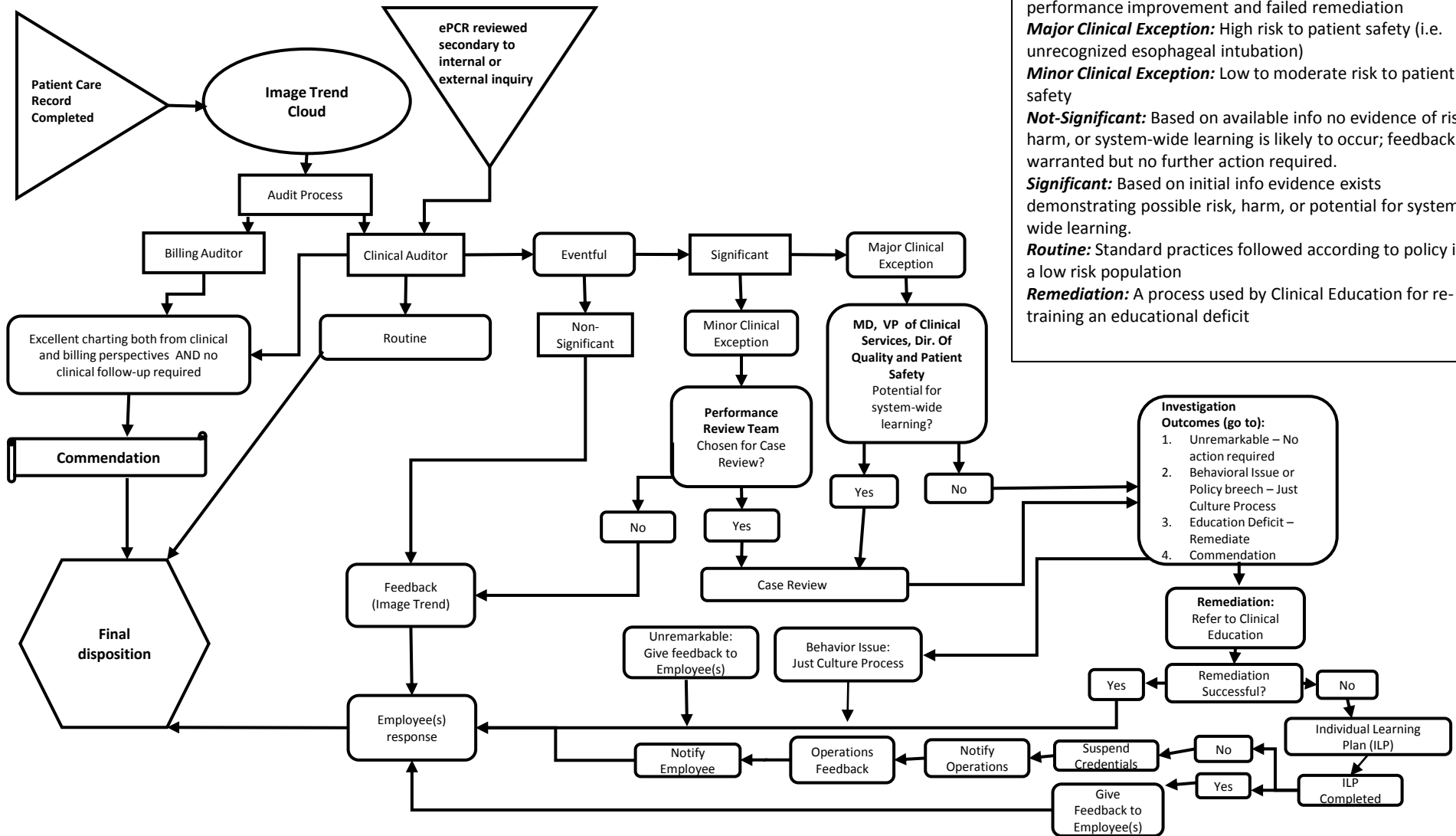




HCEC Clinical Quality Improvement Machine



Definitions:

Clinical Auditor: Approved clinically credentialed staff member designated by the Medical Director to evaluate the patient care record from a medical standpoint (e.g. could include Field Paramedics, Supervisors, Clinical Services staff, etc.)

Eventful: ePCR indicates interesting/unusual circumstances, or clinical exception exists

Individual Learning Plan: Used after attempts at remediation. Very specific objectives given to facilitate performance improvement and failed remediation

Major Clinical Exception: High risk to patient safety (i.e. unrecognized esophageal intubation)

Minor Clinical Exception: Low to moderate risk to patient safety

Not-Significant: Based on available info no evidence of risk, harm, or system-wide learning is likely to occur; feedback is warranted but no further action required.

Significant: Based on initial info evidence exists demonstrating possible risk, harm, or potential for system-wide learning.

Routine: Standard practices followed according to policy in a low risk population

Remediation: A process used by Clinical Education for re-training an educational deficit